



**ACT AP224B
GPON HGU
ONT**

**Quick Reference
Guide**

Revision B

ACT AP224B GPON HGU ONT

Quick Reference Guide

ACT Document Number: ACT AP224B GPON HGU ONT

Quick Reference Guide Revision B

Copyright © 2018 Ascent Communication Technology Limited.

All rights reserved. Reproduction in any manner whatsoever without the express written permission of Ascent Communication Technology is strictly forbidden.

This document is produced to assist professional and properly trained personnel with installation and maintenance issues for the product. The capabilities, system requirements and/or compatibility with third-party products described herein are subject to change without notice.

For more information, contact ACT: support@ascentcomtec.com



Revision History

Revision	Date	Reason for Change
A	2/15/2018	Initial release
B	2/17/2018	Updated sections

Table of Contents

Introduction	4
1 Hardware Connection	4
2 Computer Setup	6
3 Guide Setup.....	8
Troubleshooting	10

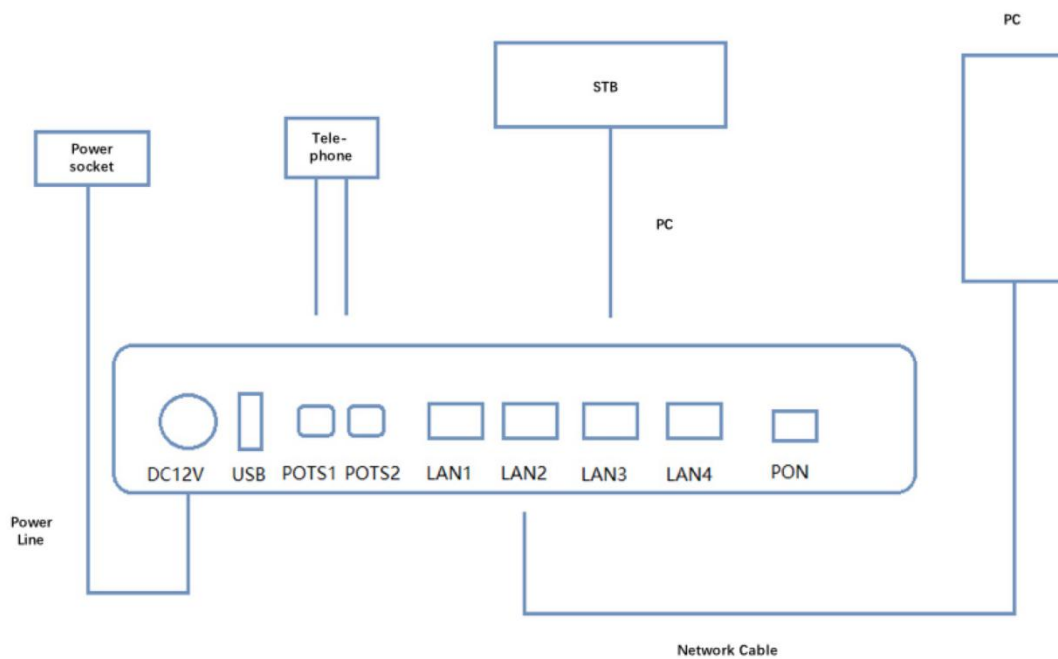
Introduction

ASCENT's AP224B is a handy, flexible and standard device, with high integration, about connection to the net. It is a high-end multi-in-one terminal product up to IEEE802.11b/g/n standard, providing connection with high performance for home users and individual merchants.

Main Characteristics:

- Compliant with ITU-T G.984/988 standard, adopting GPON uplink set and monitored through WEB
- Remote configuration and management through TR069 protocol
- NAT and DHCP help to set the network and make internet access easy
- Firewall protection
- MAC and URL provide customization for Internet safety performance
- Terminal wireless access

1 Hardware Connection



Connection finished, please check the indicators.

POWER	Power indicator	Green	ON: power on OFF: power off
PON	PON indicator	Green	ON: ONU activation OFF: no ONU activation Flickering: ONU activation on
WLAN	WLAN indicator	Green	ON: connected but no data transmission OFF: power off or no connection between port and net Flickering: data transmission
LAN 1 to 4	Ethernet indicators	Green	ON: connected but no data transmission OFF: power off or no connection to terminal device Flickering: data transmission
POTS	Voice indicator	Green	ON: connected but no data transmission OFF: power off or no connection to terminal device Flickering: data transmission.
USB	USB indicator	Green	ON: connected but no data transmission OFF: power off or no connection to terminal device Flickering: data transmission



Note

If there is something wrong with the indicators, please check the line connections.



Warning

Lay the devices on horizontally flat surface.

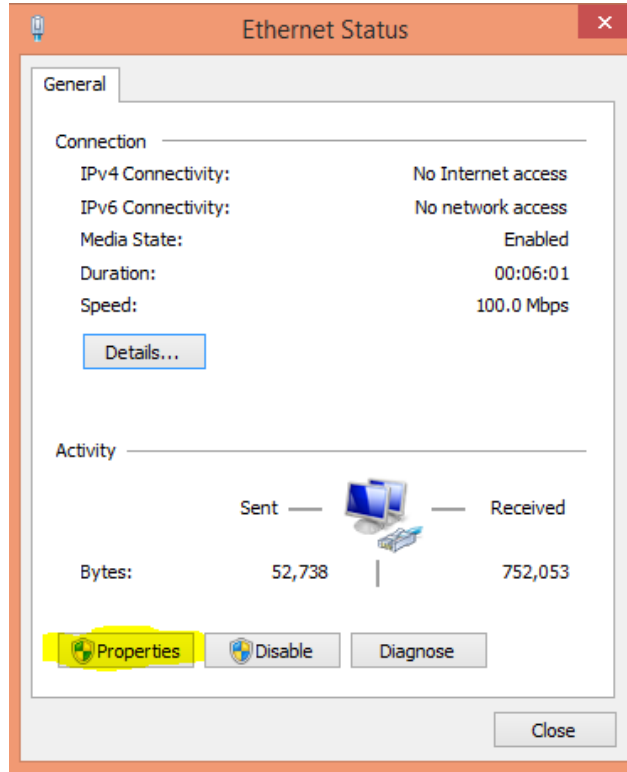
Shut down the power supply and unplug all line connections during a lightning storm.

Keep the device away from heaters and keep the ventilation.

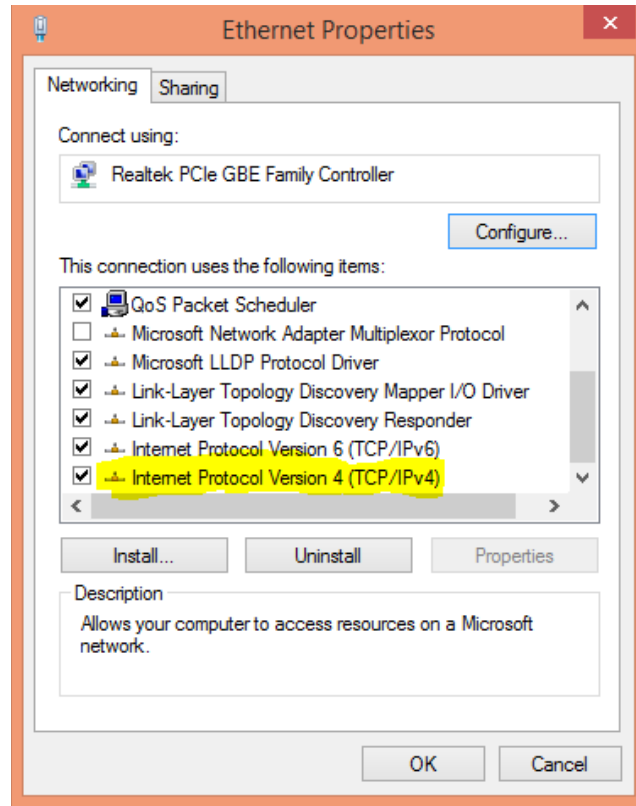
Use configured rated power adapter.

2 Computer Setup

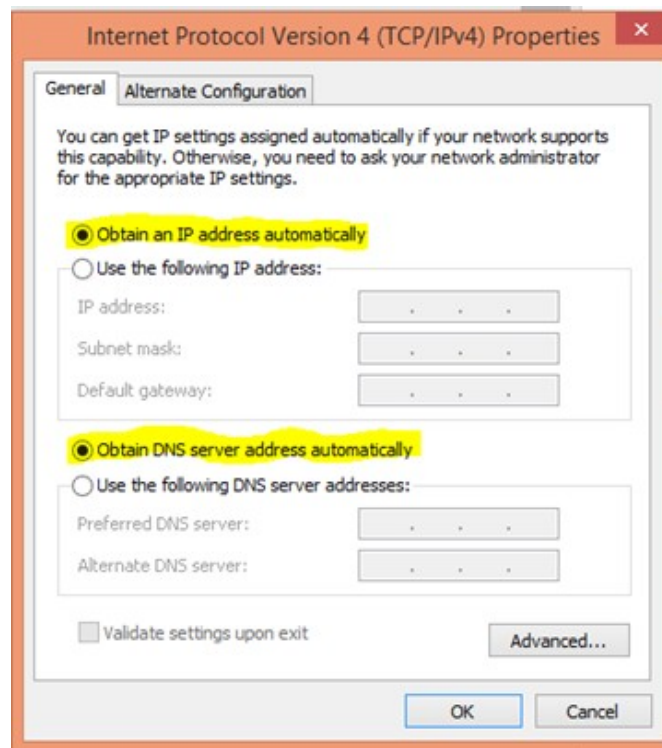
1) Click “Start → Control Panel → Network and Internet → Network and Sharing Center → Local Connection”, choose “Local Connection”, and “Properties”.



2) Double click “Internet Protocol Version 4 (TCP/IPv4)”



3) Choose “Obtain an IP address automatically” and “Obtain DNS server address automatically”, then click “OK”.



3 Guide Setup

1) Open Internet Explorer



2) Type 10.0.0.10 or the ONT IP address set by the engineer in address bar, enter the web, and type **UserName "admin"** and **Password "super&123"** to log in to the AP224B user interface.

Welcome to login

UserName

Password

Do as the following steps if UserName and Password is modified.

Status	Network	Security	Apply	Manage
User	Device			
Access Control -- Password				
Original Username:	<input type="text" value="user"/>			
Old Password:	<input type="password"/>			
New Password:	<input type="password"/>			
Confirm Password:	<input type="password"/>			
<input type="button" value="Save"/>				

3) Device Management

- a. On the interface, click "Device Basic Info" under "Status" to see the basic information of the device.

Status	Network	Security	Apply	Manage
Device Info WAN Info User Info VOIP Info				

Device Basic Information

Run Time	2 min
Local Time	1970-01-01 08:02:02
Device Model	AP224B
Device ID	984562-00252200242
Hardware Version	A0
Software Version	10.0.32B.524

b. Do as follows to save and restart the router:

Status	Network	Security	Apply	Manage
User Device				
<p>Click the following button "save" and restart the router.</p> <input type="button" value="Save/Restart"/>				

4) Device configuration:

a. Under WAN, users can check the default WAN Information.

Status	Network	Security	Apply	Manage
Device Info WAN Info User Info VOIP Info				

WAN Information

Service Interface	Status	IP Address
1_TR069_R_VID_46	down	INIT
2_INTERNET_R_VID_44	down	

Network Information

Default Gateway	
Subnet Mask	
primary DNS Server	
Secondary DNS Server	

Reset: when UserName and Password logging in the router are forgotten, please reset the router. With power on, use a toothpick or paperclip to hold down "RESET" for 10 seconds to restart.



Note

After restoration, reset the router.

Troubleshooting

1. The computer can see wireless signals but cannot be connected.
 - a. Please make sure the connected wireless name is in accordance with the SSID of the wireless router.
 - b. Check the signal strength of the wireless signal, adapt the location of the router if necessary.
 - c. Refresh the networks list and reconnect the wireless.
 - d. Consult manufacturers of the laptop or WLAN card, then connect WLAN based on acknowledged parameters.
 - e. Restart the computer.

If it still does not work, please restore the router and reset it to connect.

2. No wireless signals received.
 - a. Please ensure WLAN switch is on.
 - b. Check WLAN driver is installed successfully or not; if not, reinstall it.
 - c. Check wireless functions of the router is ready with SSID Broadcast permission or not.
 - d. Check the service is on or not. Here are the steps with Windows 7: right-click "my computer", choose "manage". In management, choose "service and application" and unfold "service" to find "WLAN AutoConfig". Make sure it is on.
 - e. Try to get closer to the router. If it still does not work, try to connect any other wifi; if not, restore the router and reset.



GERMANY

Langwiesenweg 64-71
75323 Bad Wildbad, GERMANY
Phone: +49 (0) 7081 / 17 02 0

WEB: www.polytron.de



Ascent Communication Technology Ltd

AUSTRALIA

140 William Street, Melbourne
Victoria 3000, AUSTRALIA
Phone: +61-3-8691 2902

HONG KONG SAR

Unit 9, 12th Floor, Wing Tuck Commercial Centre
177 Wing Lok Street, Sheung Wan, HONG KONG
Phone: +852-2851 4722

CHINA

Unit 1907, 600 Luban Road
200023, Shanghai CHINA
Phone: +86-21-60232616

WEB: www.ascentcomtec.com

Specifications and product availability are subject to change without notice.
Copyright © 2018 Ascent Communication Technology Limited. All rights reserved.
Ver. ACT_AP224B_GPON_HGU_ONT_QRG_V1b_Feb_2018